

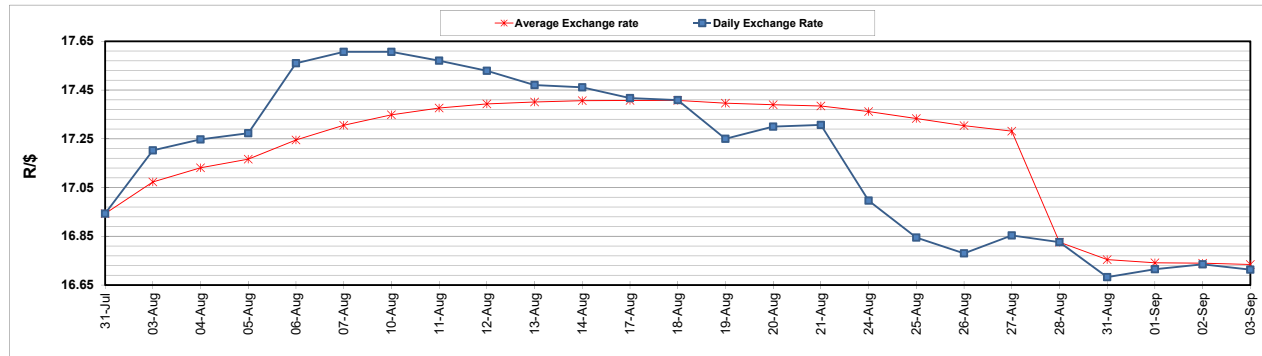
	PETROL 95 ULP	PETROL 93 ULP & LRP	DIESEL 0.05%	DIESEL 0.005%	ILL. PAR.
GAUTENG PUMP PRICE (SA c/l) AS FROM 02/09/2020	1,518.000	1,489.000	-	-	-
WHOLESALE PRICE (SA c/l) AS FROM 02/09/2020	-	-	1,327.560	1,331.960	716.828
SINGLE NATIONAL MAXIMUM RETAIL PRICE	-	-	-	-	899.000
BASIC FUEL PRICE - 03/09/2020 (SA c/l)	532.235	523.508	498.579	500.853	435.286
PRESS RELEASE CONTRIBUTION TO BFP 02/09/2020 - 03/09/2020 (SA c/l)	565.470	546.470	576.630	581.030	512.128
UNIT OVER/(UNDER) RECOVERY - 03/09/2020 (SA c/l)	33.235	22.962	78.051	80.177	76.842
AVERAGE BASIC FUEL PRICE 28/08/2020 - 03/09/2020	549.761	542.162	527.236	529.775	461.755
AVERAGE UNIT OVER/(UNDER) RECOVERY 28/08/2020 - 03/09/2020	18.289	6.888	61.994	63.855	65.973

### ANALYSIS MOVEMENT OF AVERAGE OVER/(UNDER) RECOVERY

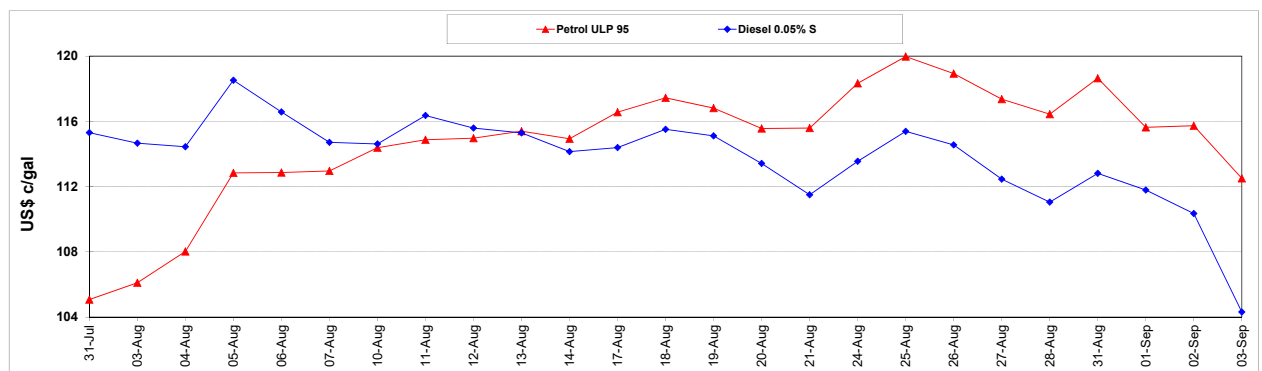
	PETROL 95	PETROL 93	DIESEL 0.05%	DIESEL 0.005%	ILL. PAR.
- MOVEMENT IN INTERNATIONAL PRODUCT PRICES	0.319	(10.834)	44.760	46.538	50.880
- MOVEMENT IN EXCHANGE RATE	17.970	17.722	17.234	17.317	15.093
AVERAGE UNIT OVER/(UNDER) RECOVERY 28/08/2020 - 03/09/2020	18.289	6.888	61.994	63.855	65.973

### R/\$ EXCHANGE RATE - (R/\$16.7133 - 03/09/2020)

#### EXCHANGE RATE USED IN BASIC FUEL PRICE



#### INTERNATIONAL PRODUCT PRICES OF BASKET USED IN BASIC FUEL PRICE



#### BASIC FUEL PRICE IN SA CENTS PER LITRE

